

## Technical Data Sheet M Series

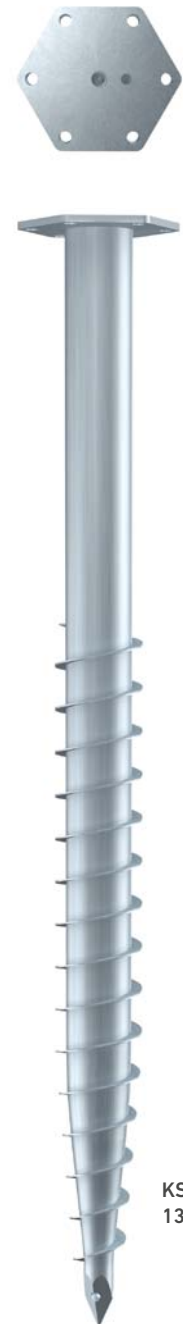
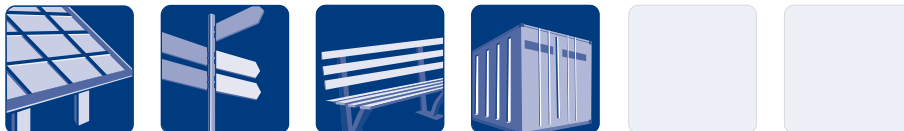
### Basic Info

KSF M 76x2100-M16	KSF M 76x1600-M16	KSF M 76x1300-M16
Nominal length (mm)		
2100	1600	1300
Tube diameter (mm)		
76.10	76.10	76.10
Weight (kg)		
16.00	12.50	10.00
Item number		
25204	25203	25202

### Construction

- Flange: Sheet metal S355
- Nut: DIN EN ISO 4032-8
- Continuous welded helix
- Coating: Hot-dip galvanized according to DIN EN ISO 1461

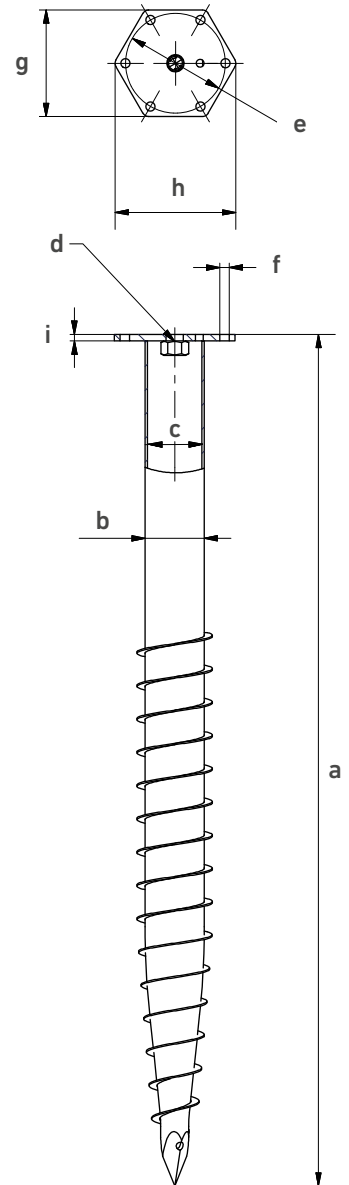
### Applications



KSF M 76x  
1300-M16

### Technical Data

	KSF M 76x2100-M16	KSF M 76x1600-M16	KSF M 76x1300-M16
<b>a</b> Length (mm) ( $\pm 25$ mm)	2078	1578	1278
<b>b</b> Shaft outer diameter (mm)	76.10	76.10	76.10
<b>c</b> Inner diameter (mm)	68.90	68.90	68.90
<b>d</b> Thread	M16	M16	M16
<b>e</b> Pitch circle diameter (mm)	150	150	150
<b>f</b> Pitch circle holes (mm)	6 x $\varnothing 14$	6 x $\varnothing 14$	6 x $\varnothing 14$
<b>g</b> Flange wrench size (mm)	160	160	160
<b>h</b> Flange outer diameter (mm)	182	182	182
<b>i</b> Flange thickness (mm)	8	8	8



### Online Service

KSF M 76x2100-M16	KSF M 76x1600-M16	KSF M 76x1300-M16
-------------------	-------------------	-------------------

Webkey

M2520411D



M2520311D



M2520211D



Subject to technical change!

Krinner Schraubfundamente GmbH | Passauer Straße 55 | D-94342 Straßkirchen  
 Phone: +49 9424 9401-80 | E-Mail: service@krinner.com | www.krinner.com