

## Technical Data Sheet M Series

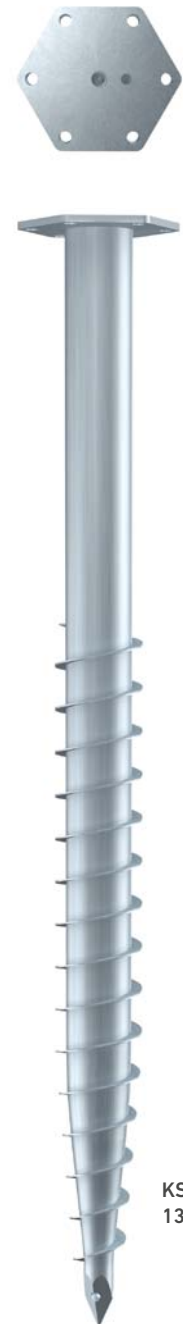
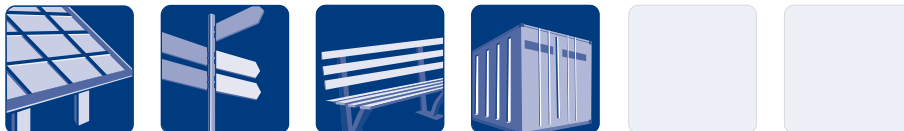
### Basic Info

KSF M 76x2100-M16	KSF M 76x1600-M16	KSF M 76x1300-M16
<b>Nominal length (mm)</b>		
2100	1600	1300
<b>Tube diameter (mm)</b>		
76.10	76.10	76.10
<b>Weight (kg)</b>		
16.00	12.50	10.00
<b>Item number</b>		
25204	25203	25202

### Construction

- Flange: Sheet metal S355
- Nut: DIN EN ISO 4032-8
- Continuous welded helix
- Coating: Hot-dip galvanized according to DIN EN ISO 1461

### Applications



KSF M 76x  
1300-M16

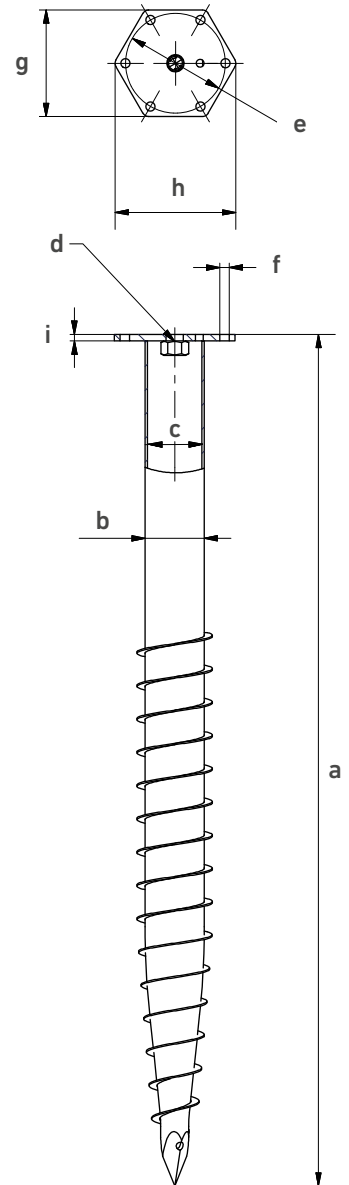
Subject to technical change!

**Krinner Schraubfundamente GmbH** | Passauer Straße 55 | D-94342 Straßkirchen  
Phone: +49 9424 9401-80 | E-Mail: [service@krinner.com](mailto:service@krinner.com) | [www.krinner.com](http://www.krinner.com)

**efficient · no concrete · durable**

### Technical Data

	KSF M 76x2100-M16	KSF M 76x1600-M16	KSF M 76x1300-M16
a	Length (mm) ( $\pm 25$ mm)		
	2078	1578	1278
b	Shaft outer diameter (mm)		
	76.10	76.10	76.10
c	Inner diameter (mm)		
	68.90	68.90	68.90
d	Thread		
	M16	M16	M16
e	Pitch circle diameter (mm)		
	150	150	150
f	Pitch circle holes (mm)		
	6 x $\varnothing 14$	6 x $\varnothing 14$	6 x $\varnothing 14$
g	Flange wrench size (mm)		
	160	160	160
h	Flange outer diameter (mm)		
	182	182	182
i	Flange thickness (mm)		
	8	8	8



### Online Service

KSF M 76x2100-M16	KSF M 76x1600-M16	KSF M 76x1300-M16
-------------------	-------------------	-------------------

Webkey

M2520411D



M2520311D



M2520211D



Subject to technical change!

Krinner Schraubfundamente GmbH | Passauer Straße 55 | D-94342 Straßkirchen  
 Phone: +49 9424 9401-80 | E-Mail: service@krinner.com | www.krinner.com